

**HAWAII**

**STORAGE & ORGANIZATION ISSUE**

# HOME

+ REMODELING

# Good to Grow

FREE

A '70s Kahala ranch house is reimagined for an active family



**JOYS OF KOI**  
Make a Splash Outside

**SOLAR: NOW WHAT?**  
A Worthwhile Investment, Despite Caps

**THE BIG SHOW**  
Home Building + Remodeling Show Guide Inside

37

WAYS TO  
GET IT  
TOGETHER  
IN 2016



# FIT TO FIRM

*A 1970s ranch house is renovated for function and open living.*

BY DENA TOMLINSON / PHOTOS BY OLIVIER KONING

**The Kahala location was perfect — tucked away on Waiiki Street with just enough distance to hush the nearby highway — but the house was not. With active teenagers and a pack of pets, these homeowners needed to add space and function to their new home.**

Designer Jamie Jackson, who conceptualized the remodel, wanted to preserve the architectural integrity of this 1970s ranch-style home, but completely reorganize and update its interior. Removing the walls separating the kitchen from the rest of the home and establishing an inviting living space, Jackson created a bright, open-concept floor plan fit to grow a young family.

On the to-do list: Install a new structural beam to support the width of the grand room, keep the furnishings light and chic, and upgrade the functionality simply and subtly, without compromising on style. “This house had such a great look, we just needed to bring it up to date and add in the family’s personal flair,” explains Jackson.

### Living Room

Floral-patterned pillows bring a burst of brightness to Mitchell Gold slip-covered furniture. A driftwood-colored television cabinet and hand-woven baskets provide unique storage for the entertainment area. Large glass sliding doors leading out to the pool dramatically open up the space, encouraging easy exterior access and allowing natural light to illuminate the new common area.



“This house had such a great look, we just needed to bring it up to date and add in the family’s personal flair.” — JAMIE JACKSON





**“The homeowner had such a fun style sense; pops of color in the little accessories really added that bit of personality to the scene.”** —JAMIE JACKSON

### Kitchen

**(ABOVE)**  
Dressed in a sophisticated black and white palette, the new kitchen's purposeful design allows for easy access to all cooking essentials and quick meal preparations. Ann Sacks subway tiles grid the backsplash above shadowy Ceasar Stone counters. Stainless steel SubZero Wolf appliances and block-wood open shelving maintain the kitchen's contemporary feel.

### Banquet

**(OPPOSITE PAGE, LEFT)**  
A custom-built banquet acts as a fun, dining-table alternative and is the new nightly spot for homework. Keeping the look light and airy, Jackson sprinkled in Jonathan Adler accessories to add color and humor. “The homeowner has such a fun style sense; pops of color in the little accessories really added that bit of personality to the scene,” says Jackson.

### Pantry

**(OPPOSITE PAGE, RIGHT)**  
Creative storage solutions were essential to complete the functionality of the home. Lining the kitchen with pullout drawers and converting a former hallway into a spacious pantry help delegate dishware and organize personal items. A glass display hutch guards the pantry entrance, revealing the homeowner's collection of treasures and formal tableware.



## Cooking in Style with sears

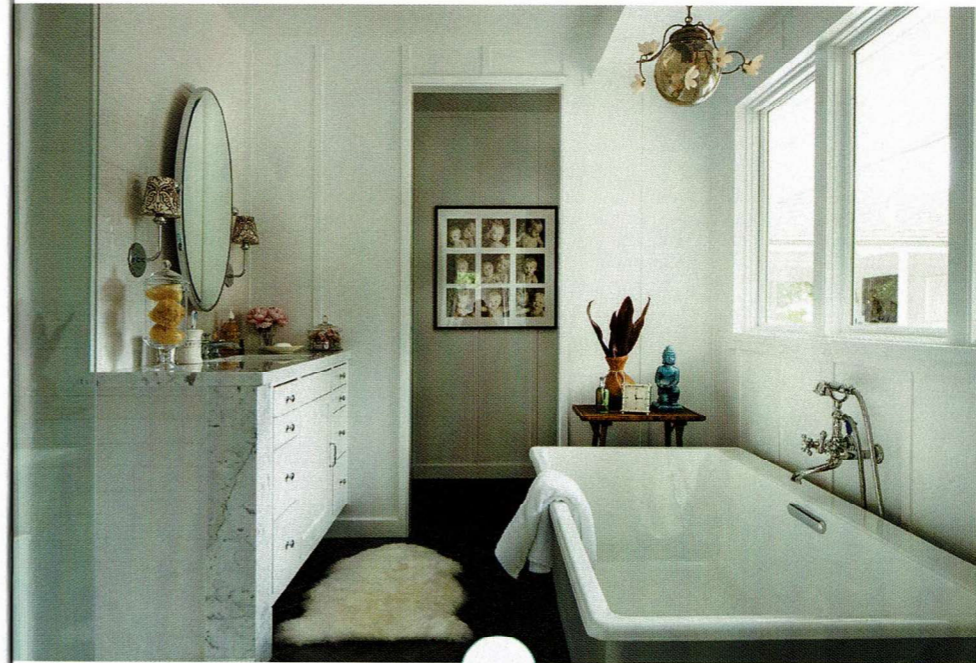


Pearlridge Mall • Windward Mall • Queen Kaahumanu Center • Prince Kuhio Plaza



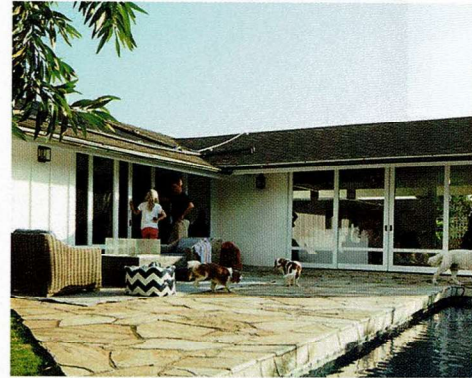
### Bedroom

The whimsical John Robshaw linens dressing the bed complement the thatched-wood headboard and provide contrast to the smoky wood-grained ceramic-tile flooring, which runs throughout the house. Jackson acquired the majority of the home's furnishings, linens and accessories from Pacific Home.



### Bathroom

Large picture windows hang above a modern soaking tub, giving an abundance of soft sunlight during the day. The custom, multidrawer vanity helps organize toiletries and hide clutter to keep a clear counter.



### Outside

Modest landscaping with plenty of lawn to roam on and a custom-built skate ramp give the kids and pets ample room to play.



HAWAII'S FIRST AND LARGEST ORGANIZATION & STORAGE STORE!

EWA BEACH (808) 693-8888  
KAHALA MALL (808) 739-7007

www.simplyorganized.net

\*Sales & Special Buys are limited to stock on hand. While supplies last. Prices are subject to change. We reserve the right to limit sales to reasonable family quantities.

simplyorganized  
organization made simple